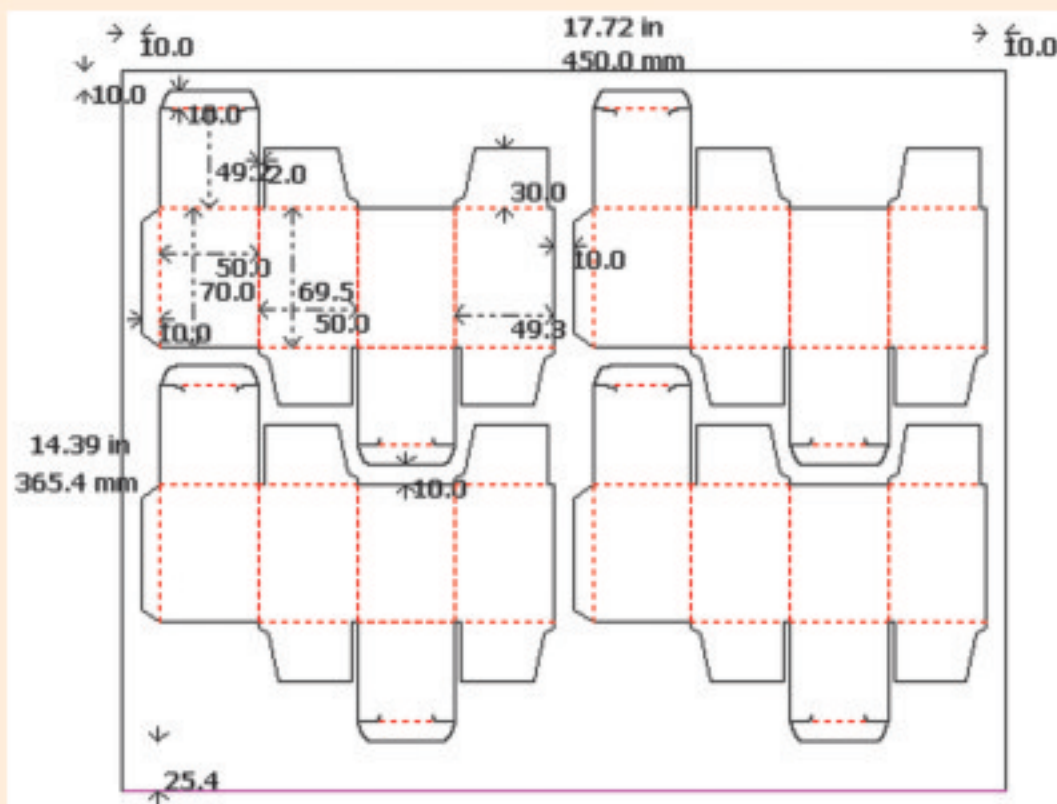


Complete Solution for Packaging

It's time you move on to the computer.

- Does the complex calculation take away all your time.
- Do you find paper/board planning rather Cumbersome?
- With the number of estimates on hand, you are left with no time to keep in touch with your clients



A Single solution for all your problems

Print **FAST** **Q** **PACK**

Ultimate Print Estimating Software for Packaging

PENTAFORCE Software Solutions Pvt. Ltd.

203, United Industrial Premises, Mogul Lane, Sitladevi Temple Road, Mahim (W), Mumbai - 400 016
Tel.: +91 (22) 24380476, Fax: 91(22) 24373523 • email: pentaforce@vsnl.net website: www.penta-force.com

The PrintFastQ Pack advantage includes and is not limited to:

- 1 Intuitive estimation software for packaging.
- 2 Computes complex estimates instantly.
- 3 Generates consistent and accurate estimates for jobs on the spot.
- 4 Calculates precise board requirement by creating optimum interlocking layouts.
- 5 Calculates plate requirements automatically.
- 6 Impressions and printing costs calculated automatically.
- 7 Has all provisions for numerous Post Press Operations.
- 8 Standard-Reverse-Tuck, French-Reverse-Tuck, Standard-Straight-Tuck, Himes-Lock-Auto-Bottom, Houghland-Snap-Lock, Double-Anchor-Lock, Full-Overlap-Seal, Airplane Style Straight Tuck Cartons and much more...
- 9 Can be used by your multiple branches and offices.
- 10 Can print client quotations directly.

With an easy to understand screen PrintFastQ Pack will take you to new realms of carton interlocking job. User-friendly features and on accurate computation of job make PrintFastQ Pack a must for all interlocking jobs.

The screenshot displays the 'Estimate Details' window of the PrintFastQ software. It is divided into several sections for data entry and calculation.

Case Information: Case No. 38A, Date 20/10/2008, Job Name Calcipil, Description: Reverse tuck carton, Type of Job: Standard Reverse Tuck.

Dimensions - Tuck Top Bottom: Units: millimeters, Length: 60 Tuck: 15, Width: 95 Dust Flap: 25, Depth: 120 Glue Flap: 15, Bleed / Gap, Inseal: 5 Side: 5.

Client Details: Name: Pentaforce Software Solutions Pvt Ltd, Attn: Mr/Ms: Ashish, Address: 203 United Industrial Estate, Mogal Lane, Malvi Vast, Mumbai 400016.

Fabrication: Charge: 1, Fabrication: 0.00.

Commission In %: Commission: 0.0, Agency: 0.0.

Quantity Rate/Piece:

Quantity	Rate/Piece
1	100000 0.951
2	150000 0.894
3	200000 0.838
4	0 0.000
5	0 0.000

MarkUp In %: Paper: 0.0, Labour: 0.0, Process: 0.0.

Section Details Table:

Section Name	Paper	TypeSetting	Processing	Proofing	MakeReady	Printing	F.
Reverse Tuck	82892.95	0.00	0.00	0.00	0.00	6880.00	

Buttons at the bottom include: Neg Section, View Section, Save, and Cancel.